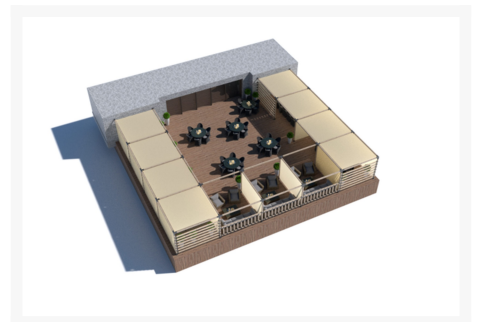
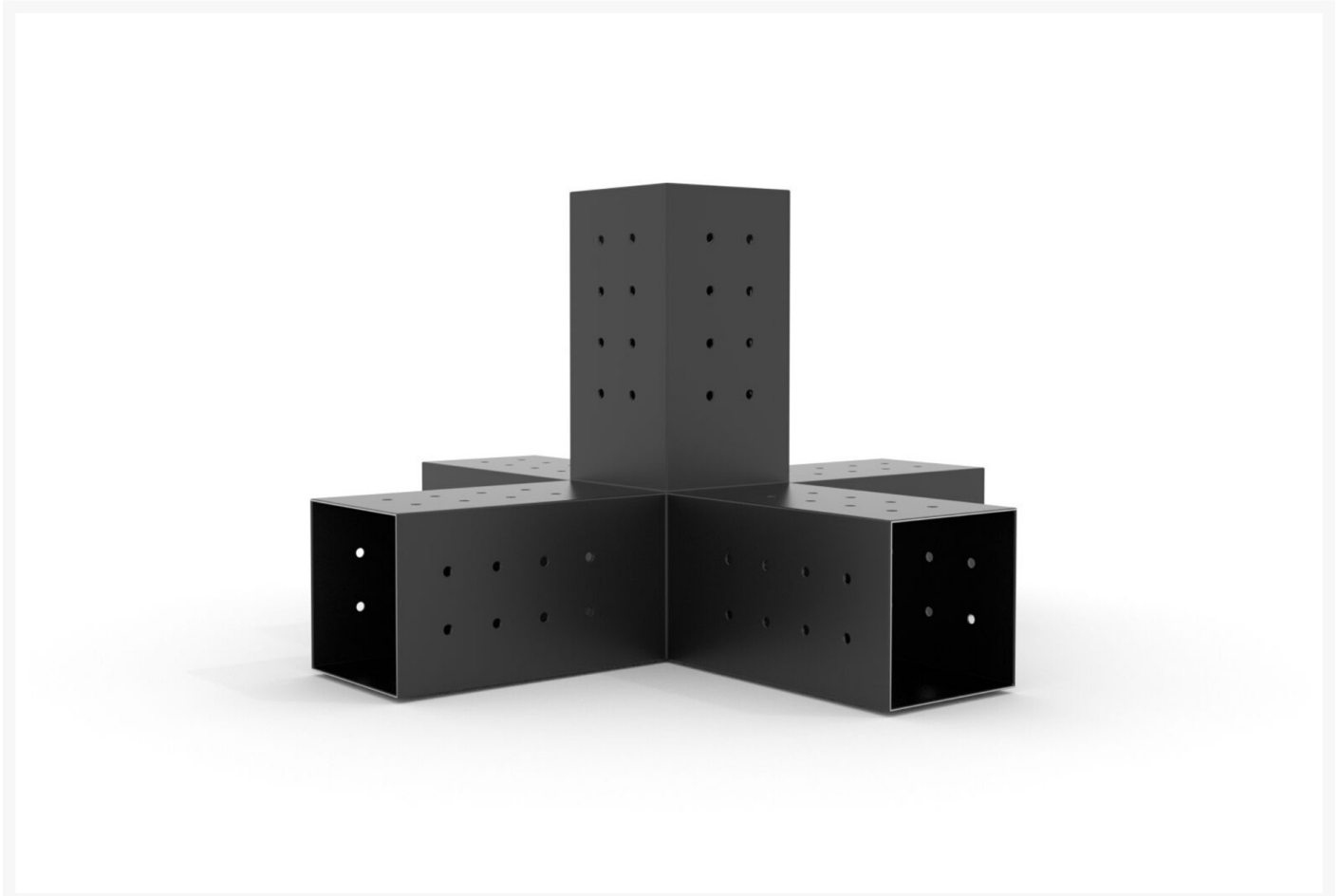


Product Images





Short Description

Quint is our 5 arm room builder, it allows you to connect 3 pergola is an L shape or 4 pergolas together for large commercial patio's or greenhouses etc.The Toja Grid offers a modern approach to style & design along with affordability, quick assembly, and quality craftsmanship Key Note- 4x4 is a size reference.

Description

The Toja Grid QUINT & SOLO for 4x4 Wood (G021050MB1) by Toja Grid. Quint is our 5 arm room builder, it allows you to connect 3 pergola is an L shape or 4 pergolas together for large commercial patio's or greenhouses etc.The Toja Grid offers a modern approach to style & design along with affordability, quick assembly, and quality craftsmanship Key Note- 4x4 is a size reference. The most common wood is actually 3.5" x 3.5" with rounded edges. Some types have sharp edges or are a true 4"x4" and will not fit. Also note that fresh pressure treated wood or wet wood will be swollen, we advise installing with dry wood

Includes

- One (1) QUINT 5 Arm Pergola Structure Expansion Bracket for 4 x 4 Wood
- One (1) Solo For 4 x 4 Wood Posts

Dimensions

- QUAD Length Extension Bracket
 - Overall: 17.75"W x 10.75"D x 10.75"H
 - Opening: 3.75"W x 3.75"D x 7"H
- SOLO Base & Wall Support Bracket
 - Overall: 4"W x 4"W x 7"H
 - Opening: 3.75"W x 3.75"D x 7"H

Features

- Metal Parts:
 - 14 gauge zinc coated steel
 - 10 year outdoor powder coating
 - 12 wood screws included

Tips

We often take a solo bracket with us when purchasing lumber, slide it on the ends of the wood to ensure proper fit

What Type of Wood Should be Used?

Any standard dry straight 4x4 wood will work. Our products were made to assemble with standard 8ft, 10ft and 12ft lengths available at most lumber yards. Note: 4x4 wood is in fact 3.5" x 3.5" - the industry simply calls it 4x4. We suggest cedar, however pressure-treated, engineered, tiger wood, and even IPE will work.

What Hardware Do I Need to Buy?

All the hardware you need is included in each box to connect our brackets to the 4x4 wood posts. The only hardware you need is the securing hardware, as we do not know where you will install your structure.

Where Can Toja Grid be Mounted?

We always advise our customers to check your local building codes prior to mounting your Toja Grid pergolas and Hammocks.

About the Manufacturer

Toja is a Canadian brand that offers high quality outdoor furniture and pergola systems at great value. Their mission is to provide customers with an inviting and comfortable outdoor environment that they will enjoy for many years. Toja's modern approach to style and design along with affordability is what sets them apart from the competition.

Additional Information

SKU	G021050MB1
Ships Out Estimate	1 - 2 Weeks
Residential Warranty	2 Years

DISC Toja Grid QUINT & SOLO for 4x4 Wood G021050MB1

was
\$312.00 Special
Price
\$168.00

