



**PATIO**  
PRODUCTIONS

**Patio Productions San Diego**

**2161 Hancock St**

**San Diego, CA 92110**

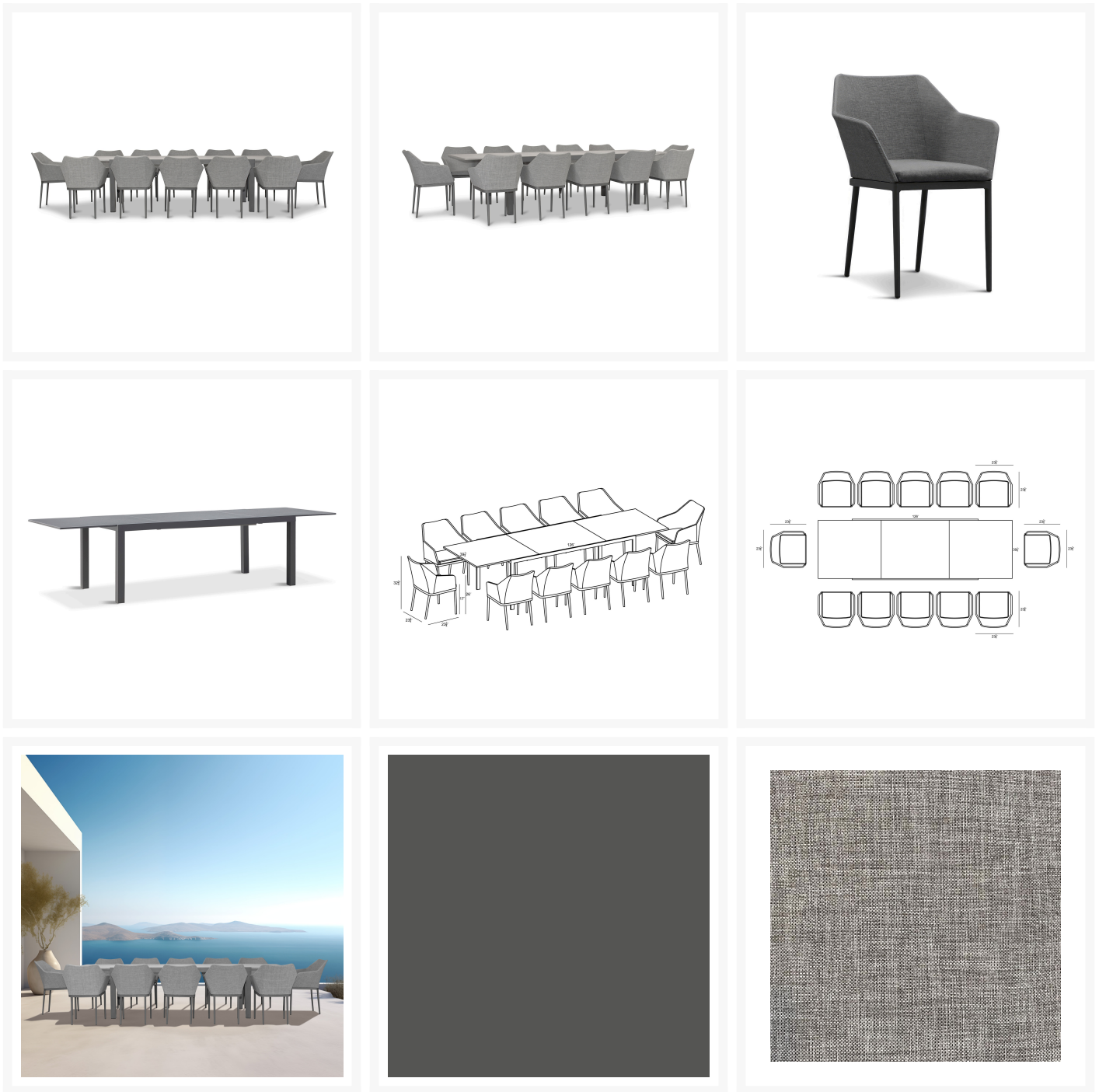
**Phone: 1-888-947-4449**

---

## Product Images

---





## Short Description

Tailor 13 Piece Extendable Dining Set - Slate/Concrete HL-TA-SL-13EDS-OG by Harmonia Living

## Description

Sophistication and versatility converge with the comfortable Tailor 13 Piece Extendable Dining Set - Slate/Concrete (HL-TA-SL-13EDS-OG) by Harmonia Living. Its fully-welded aluminum frames are treated with a powder-coated finish to ensure lasting performance across the seasons. Bring the intimate style of the

indoors outside with weather-resistant Texteline mixed with olefin fibers to create an easy-to-maintain and sturdy seat. The chairs are paired with the Spread Table, which boasts modern lines and durable, low-maintenance materials. Al-Stone is made from rust-proof aluminum with a heat and vacuum applied laminate that is incredibly realistic and scratch resistant. The table features one extension leaf that rotates into place during use or for easy storage under the table when not in use, and can easily be operated by one person. This patio dining table seats up to 12 when extended and 8 when not extended making it a flexible outdoor dining table for entertaining. Harmonia Living can be tailored to both Residential and Commercial settings and is committed to delivering exceptional furnishings to your outdoor space.

#### Includes

- Twelve (12) Tailor Dining Arm Chairs HL-TA-SL-DAC-OG
- Twelve (12) Seat Cushions
- One (1) Spread Extendable Dining Table HL-SP-SL-EXTDT-CON

#### Dimensions

- Tailor Dining Arm Chair: 23.75"W x 23.75"D x 32.75"H (9 lbs.)
  - Frame Height: 32.75
  - Seat Height (No Cushion): 17
  - Seat Height (With Cushion): 19.25
  - Back Height: 13.5
  - Arm Height: 26
- Spread Dining Table: 82 - 126"W x 39.25"D x 30"H (110 lbs.)
  - Frame Height: 30
  - Under Table Height: 26.5

#### Features

- Durable, rust proof frames made from thick gauge aluminum with a high-quality powder coated finish that is appropriate for residential and commercial settings.
- Padded Olefin rope seat bucket contoured for comfort.
- Upholstered "indoor look" dining chair for outdoor use.
- Scratch resistant proprietary Al-Stone top with a concrete look.
- Easy and durable extension mechanism, simply pull apart the table from both sides and flip the extension leaf into place where it will stay put with magnetic hardware.
- Stackable design makes storage and transportation easy.
- Plastic foot glides help to protect your patio from scratching and also to help keep the furniture protected from dirt or water that can accumulate on the patio.
- Includes dining seat pad for additional comfort.
- Chairs do not require assembly, table requires assembly



## Warranty

Harmonia Living's warranty covers manufacturing defects; normal wear and tear is not included. With a little bit of care, your furniture will outlive the warranty for many years.

- Aluminum Frame: Harmonia Living extends a 3-year residential / 1-year commercial warranty against defects in workmanship and materials that cause structural failure
- Finish (Chairs Only): Harmonia Living extends a 1-year residential and commercial warranty against defects such as peeling, cracking, or extreme discoloration

## Care and Maintenance

Frame: Simply hose off or wipe down your frame to clean it! Avoid using harsh cleaners, brushes, or power washers, which could damage the finish. Take extra care when placing your furniture in humid or coastal settings; accumulation of salts and other debris can cause damage to your frame.

Disclaimer: Recommended for use only under covered patios, or if placed in direct sun, must be covered with protective cover to prevent fading.

Covers & Storage: When not in use, we recommend using a protective cover with your furniture. During harsh weather and extreme temperatures, we recommend storing the cushions in a shed or garage and covering the frames with protective covers. If you store the frames indoors during the winter, avoid storing them upside down, which can trap moisture.

## About the Manufacturer

Harmonia Living - an integration of beauty, function and durability. For over 15 years, Harmonia Living has strived to represent versatility and unparalleled value in every collection it designs and manufactures. Originally conceived from a vision to integrate elegant, high-end styles with approachable prices, Harmonia Living has grown from a small company based in San Diego, California to one that services the contiguous United States. Harmonia Living is committed to delivering outstanding service and exceptional indoor and outdoor furnishings to bring people together.

Additional Information

SKU	HL-TA-SL-13EDS-OG
Brand	Harmonia Living
Ships Out Estimate	3 - 5 Business Days
Residential Warranty	Aluminum Frame 3 Years Finish: 1 Year

Tailor 13 Piece Extendable Dining Set -  
Slate/Concrete HL-TA-SL-13EDS-OG by  
Harmonia Living

was  
\$6,280.00 Special  
Price  
\$3,788.10

