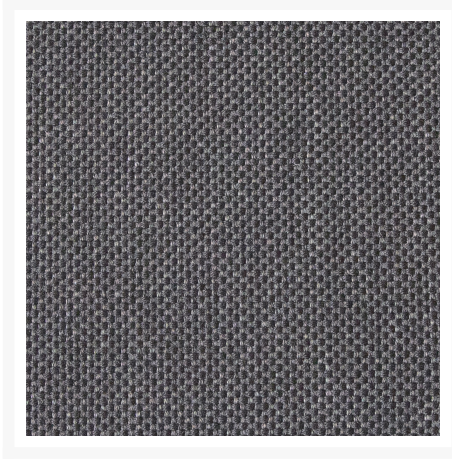


---

## Product Images

---





## Short Description

---

Amaze Stackable 2-Seat Sofa 4502T by Cane-line

## Description

---

Take a seat in the Amaze Stackable 2-Seat Sofa (4502T) by Cane-line, where simplicity harmonizes with luxury. Crafted by the renowned designers Foersom & Hiort-Lorenzen MDD, each piece in the Amaze collection is a testament to the impeccable artistry and attention to detail. With its wide arms and curved teak slats, comfort is elevated to new heights, inviting you to unwind in style. It seamlessly integrates with other members of the Amaze family or can be mixed with complementary pieces from Cane-line's diverse range, ensuring endless possibilities for personalization.

### Includes

- One (1) Amaze Stackable 2-Seat Sofa 4502T
- Two (2) Optional Grey Cane-line Natte Seat Cushions 4402YS95

### Dimensions

- 57.1" W x 32.3" D x 30.4" H (72.75 lbs.)
- Seat Height: 15"
- Arm Height: 21.7"

- Optional Sofa Cushion: 20.5" W x 20.5" D x 0.4" H (1.76 lbs.)

## Features

- Cane-line teak furniture is made from WWF-GFTN certified wood, which is your guarantee, that the wood has been sourced from responsibly and sustainably managed forests
- Teak is extra durable, resistant to light, heat, moisture and pests
- Teak displays a rich, golden brown color that may be beautifully maintained over time or allowed to gracefully age into a subtle silver patina
- Cushions use Cane-line Natte, which is a 100% solution dyed acrylic fabric. Cane-line Natte is a unique material produced by Sunbrella for Cane-line
- Cane-line Natte combines the strength of normal all weather fabrics with the comfortable softness of the traditional Sunbrella fabrics, resulting in a soft yet durable fabric. This weatherproof material withstands changing weather conditions, is UV-resistant
- Stackable design makes storage and transportation easy.
- Premium commercial-grade materials ensure durability and longevity for both commercial and residential spaces
- No Assembly Required

## Warranty

Cane-line's warranty covers manufacturing defects; normal wear and tear is not included. With a little bit of care, your furniture will outlive the warranty for many years.

- Cane-line offers a 2 year, limited structural warranty on all furniture as well as a warranty against visible forms of deterioration. This warranty is available for original invoice customers only, up to 2 years after the date of purchase on the original invoice. The warranty covers workmanship and materials on Cane-line products.

## Care and Maintenance

**Teak:** Long-term, teak furniture develops a pleasing silvery gray patina, which is cosmetic and not an indication of dryness. Its natural oils help keep this hardwood strong and durable in a variety of environments, so there's very little maintenance. Because teak is very weather-resistant, it doesn't need to be stored during the winter or covered with protective tarps. However, covering teak furniture will protect the surface from elements such as hail, wind, and snow, which can cause cosmetic damage. To keep the original golden honey finish, apply a very thin layer of Linseed or Teak oil to your furniture 1-2 times a year, depending on exposure. Cleaning with teak cleaner is recommended every 2-3 years, along with the oil application.

**Cushions & Outdoor Fabric:** Regular cleaning with mild soap and water will help prevent the build-up of dirt, which can generate mildew. Simply spot-treat stains with mild soap and water, rinse, and allow the fabric to air dry. Cushions will dry much faster when removed from the frames and placed on their sides or edges. For more information, please visit the fabric manufacturer's website.

## About the Manufacturer

Embark on a journey of comfort and style with Cane-line, a Danish design company with over 30 years of expertise in crafting functional and luxurious furniture. At Cane-line, we believe in making life comfortable, wherever you are in the world. Our mission is clear: to enhance your relaxation and unwinding experience by adding value to the spaces you inhabit.

With a relentless focus on quality, innovative technologies, and comfort, every piece of Cane-line furniture is meticulously designed and manufactured with care for the environment and the well-being of people. Whether you're lounging in your backyard oasis or enjoying the great outdoors, our outdoor collection is engineered to offer maximum comfort and minimal maintenance.

## Additional Information

---

SKU	4502T
Brand	Cane-Line
Ships Out Estimate	6 - 8 Weeks
Residential Warranty	All materials: 2 Years

# Amaze Stackable 2-Seat Sofa 4502T by Cane-line

\$3,440.00

