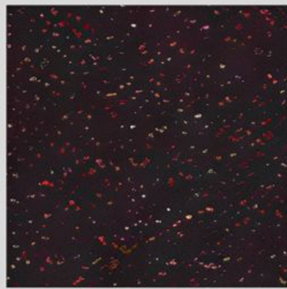


---

## Product Images

---

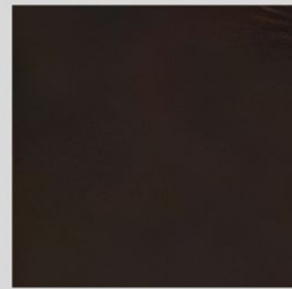




**Rosewood (SP11)**



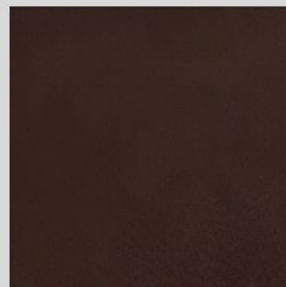
**Graphite (SP21)**



**Sable (SP22)**



**Espresso (SP42)**



**Copper Creek (SP50)**



**Shadow Grey (TG56)**



**Carbon Black (TG68)**



**Velvet White (VT25)**

## Short Description

---

Marin Swivel Rocker Dining Arm Chair 3733-SR by OW Lee

## Description

---

Embrace the tranquil beauty of coastal living with the Marin Swivel Rocker Dining Arm Chair (3733-SR) by OW Lee. Inspired by the enchanting Marin County, nestled just north of San Francisco's iconic Golden Gate Bridge, the Marin Collection by OW Lee effortlessly captures the essence of nature and modern

sophistication. Crafted with precision, its powder-coated aluminum frames are lightweight, rust-proof, and treated with a multi-step finish for ultimate outdoor durability. Sunbrella cushion fabric adds distinctive flair, fade resistance, and easy maintenance. Immerse yourself in the serene allure of the Marin Collection, where nature and modernity coalesce in perfect harmony.

#### Includes

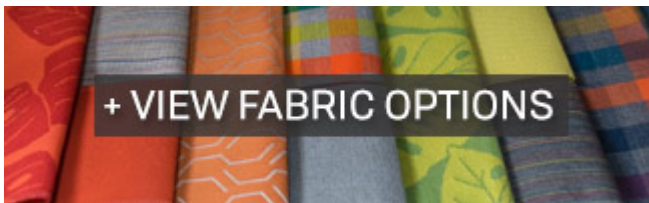
- One (1) Marin Swivel Rocker Dining Arm Chair 3733-SR
- One (1) Seat Cushion 33-S
- One (1) Optional Back Cushion 143-B

#### Dimensions

- 24" W x 26.75" D x 36.25" H (37 lbs.)
- Seat Height: 18.75"
- Arm Height: 25"
- Seat Cushion: 20" W x 19" D x 3.5" H
- Optional Back Cushion: 20.25" W x 1" D x 17.5" H

#### Features

- Powder-coated aluminum frames are lightweight, durable, and rust proof
- High efficiency transfer powder-coated aluminum frames are treated with a multi-step finish for maximum outdoor protection
- Cushions are resilient and provide maximum support and comfort
- Quick drying foam ensures moisture doesn't stay trapped in the cushion
- Available in Sunbrella fabric, which is distinctive, fade resistant and easy to clean
- Feet glides protect your furniture and deck from getting scratched
- No Assembly Required



#### Warranty

OW Lee's warranty covers manufacturing defects; normal wear and tear is not included. With a little bit of care, your furniture will outlive the warranty for many years.

- **Frame:** OW Lee offers a 20-year limited structural warranty for residential use and a 5-year structural warranty for commercial use
- **Finish:** OW Lee offers a 5-year limited residential warranty (excluding Velvet White finish on wrought iron and steel frames) and a 3-year limited commercial warranty (excluding Velvet White finish on wrought iron and steel frames and Oxford White on iron finishes) against blistering, peeling or fading
- **Cushions:** OW Lee offers a 5-year limited residential warranty and a 1-year commercial warranty on the craftsmanship and construction of the cushion, sling and padded sling seat, and Sutex material.
- **Fabric:** Sunbrella and Outdura each carries a 5-year warranty. Please refer to the warranty of Sunbrella and Outdura fabrics as the manufacturer's warranty will apply

#### Care and Maintenance

**Frame:** Simply hose off or wipe down your frame to clean it! Avoid using harsh cleaners, brushes, or power washers, which could damage the finish. Take extra care when placing your furniture in humid or coastal settings; accumulation of salts and other debris can cause damage to your frame.

Cushions & Outdoor Fabric: Regular cleaning with mild soap and water will help prevent the build-up of dirt, which can generate mildew. Simply spot-treat stains with mild soap and water, rinse, and allow the fabric to air dry. Cushions will dry much faster when removed from the frames and placed on their sides or edges. For more information, please visit the fabric manufacturer's website.

Covers & Storage: When not in use, we recommend using a protective cover with your furniture. During harsh weather and extreme temperatures, we recommend storing the cushions in a shed or garage and covering the frames with protective covers. If you store the frames indoors during the winter, avoid storing them upside down, which can trap moisture.

#### About the Manufacturer

For over seven decades, O.W. Lee has stood as a beacon of excellence in the world of fine, handcrafted casual furniture. With an unwavering commitment to both design and production, this distinguished brand has redefined the art of crafting beautiful furniture pieces. Hailing from their expansive 450,000 square-foot manufacturing facility nestled in Comfort, Texas, O.W. Lee artisans seamlessly merge time-honored techniques with cutting-edge technology to create casual furniture that's not only functional but also works of art. With a rich history and a dedication to quality, O.W. Lee is more than a brand; it's a testament to the enduring legacy of craftsmanship.

## Additional Information

SKU	3733-SR
Brand	OW Lee
Ships Out Estimate	4 - 6 Weeks
Residential Warranty	Frame: 20 Years Finish: 5 Years Cushions: 5 Years Fabric: 5 Years
Fabric	<a href="#">Performance Fabric Choices</a>

## Marin Swivel Rocker Dining Arm Chair 3733-SR by OW Lee

was  
**\$1,447.00** Special  
Price  
**\$1,085.25**

