



PATIO
PRODUCTIONS

Patio Productions San Diego

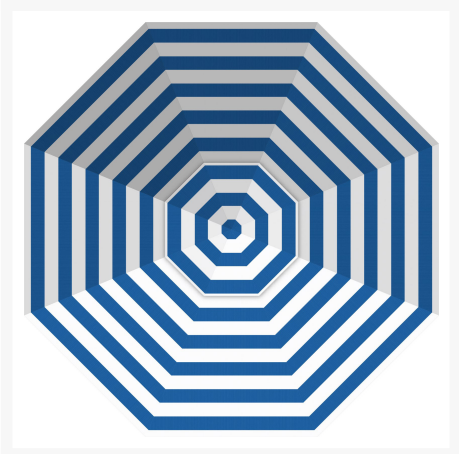
2161 Hancock St

San Diego, CA 92110

Phone: 1-888-947-4449

Product Images

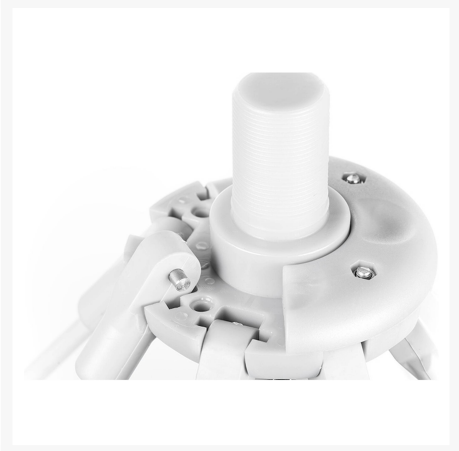
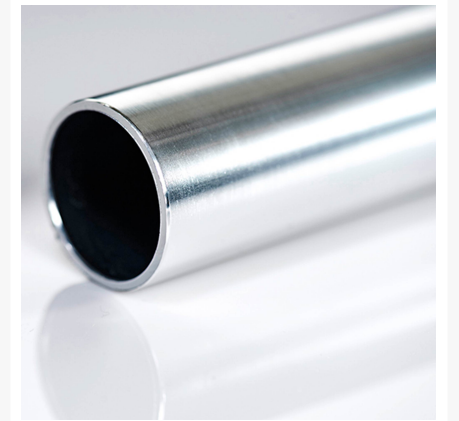
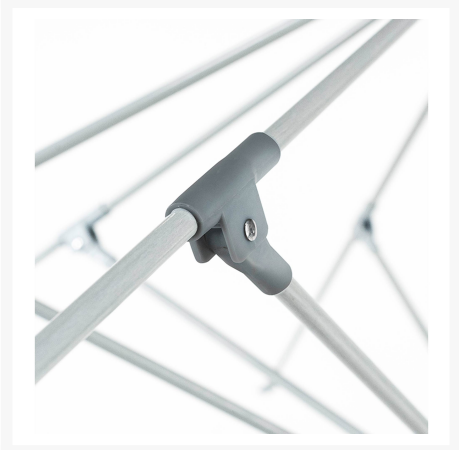




Note: Finial will match chosen frame finish

Classic Ball Finial
(BF POLYMER)

Vertex Finial
(VF POLYMER)



UMBRELLA SIZE RECOMMENDATIONS

Size and shape of umbrella change the temperature at which it is best to use. For example, a large, round umbrella is best for use in warm climates. For more information on umbrella sizes, visit www.patiosolutions.com.
*An umbrella 10" can become convertible 10" with the proper design.

| SIZE/SHAPE | DINING | DEEP SEATING* | SIZE/SHAPE | DINING | DEEP SEATING* |
|------------------------|-----------------------------|---------------|--------------------------|-----------------------------|---------------|
| 11' Octagon 85 | 48" x 48" table 4 chairs | 2 chairs | 11.5' Square 132 | 48" x 48" table 4 chairs | 2 chairs |
| 8'x10' Rectangle 80 | 48" x 48" table 4 chairs | 2 chairs | 10'x13' Rectangle 130 | 48" x 48" table 4 chairs | 2 chairs |
| 10' Round 70 | 48" x 48" table 4 chairs | 2 chairs | 13' Octagon 129 | 48" x 48" table 4 chairs | 2 chairs |
| 10' Octagon 70 | 48" x 48" table 4 chairs | 2 chairs | 10' Square 100 | 48" x 48" table 4 chairs | 2 chairs |
| 9' Octagon 57 | 48" x 48" table 4 chairs | 2 chairs | 11.5' Octagon 96 | 48" x 48" table 4 chairs | 2 chairs |
| 7' Square 49 | 36" x 36" table 4 chairs | 2 chairs | 8'x11' Rectangle 88 | 48" x 48" table 4 chairs | 2 chairs |
| 7.5' Octagon 39 | 36" x 36" table 4 chairs | 2 chairs | | | |

NOTE: *Deep Seating is for use with a 10" umbrella.



Short Description

Quick Ship Monterey Aluminum 9' Pulley Lift Octagon Umbrella Alpine White Frame 854FM-WH by Frankford Umbrellas

Description

The Quick Ship Monterey Aluminum 9' Pulley Lift Octagon Umbrella Alpine White Frame (854FM-WH) by Frankford Umbrellas is manufactured using the best and most resilient materials available. Thick fiberglass ribs allow the frame to bend and flex easily in windy conditions, while the durable aluminum center pole, maintenance free resin, and stainless-steel parts ensure this umbrella will provide years of worry-free shade. The glide pulley system is supported by a durable woven cord, which allows you to effortlessly open and close the umbrella. Available in several beautiful frame finishes, the Monterey collection is designed to allow you to bring commercial durability home to your cherished outdoor living space.

Not sure which umbrella base is right for your Frankford umbrella? Check out the attached Umbrella Base Guide to find the best fit and style for your sunshade! If you can't find the fabric or finish you're looking for, feel free to give our sales team a call at 1-888-947-4449 to discuss more options!

Includes

- One (1) Quick Ship Monterey Aluminum 9' Pulley Lift Octagon Umbrella Alpine White Frame 854FM-WH

Recommended Bases

- Minimum base weight with dining table: 50 lbs.
- Minimum free standing base weight: 100 - 150 lbs.

Dimensions

- Overall Height: 108"
- Clearance: 77"
- Closed Clearance: 41"
- Pole / Mast: 1.5"
- Upper Pole: 69"
- Lower Pole: 37"
- Weight: 20 lbs.
- Canopy Size: 9'

Features

- Aluminum frame is commercial quality, durable, and rust-proof
- Center pole 1/8" wall thickness provides incredible strength and durability
- Pulley lift system designed for smooth and effortless operation in any environment
- Fiberglass ribs are durable and will flex easily in windy conditions, making the canopy less likely to sustain damages
- Engineered to withstand 40 MPH sustained winds
- Multiple mounting options are available, either permanent or semi-permanent, for installation on any surface
- Maintenance free stainless steel hardware
- Available with marine grade acrylic Recacril outdoor performance fabric

- Canopy fabrics are easy to clean and come with a 10-year fade warranty
- Wind vent serves dual purpose of venting heat and providing stability against wind
- Assembled in the USA

Warranty

Frankford's warranty covers manufacturing defects; normal wear and tear is not included. With a little bit of care, your furniture will outlive the warranty for many years.

- **Frame:** Frankford warrants the frame structure of the ECLIPSE®, AURORA, NOVA, G-SERIES, GREENWICH, MONTEREY, CATALINA, and, AVALON for a period of five (5) years residential / three (3) years commercial from the original date of purchase. This warranty includes manufacturer defects to the notch, runner, center pole, and skeleton structure. This warranty does not include damages sustained to these umbrellas while in any degree of tilt.
- **Finish:** Frankford warrants all powder coat finishes on aluminum masts in ECLIPSE®, AURORA, NOVA G-SERIES, GREENWICH, MONTEREY, CATALINA, and LAUREL for a period of three (3) years from the original date of purchase. This warranty includes chipping, peeling, flaking, bubbling, and fading of the powder coat finish on the aluminum masts only.
- **Fabric:** Frankford offers 9 oz. marine-grade solution dyed acrylic fabric from several mills, including Sunbrella®, Outdura, and Recasens®. All marine-grade acrylic fabrics we use carry a warranty of ten (10) years residential / seven (7) years commercial from the original date of purchase. The warranty protects against the loss of characteristics, rot, mildew, and colorfastness typical in normal atmospheric conditions. The product must be properly installed, maintained, and under normal use and environment. This warranty does not cover damage caused by contact with foreign objects, abuse, negligence, vandalism, burns of any kind, improper cleaning techniques, normal wear, perforations, weather soiling, environmental pollution stains, natural disasters, or acts of nature. Damage caused by the storage method or location used by clients is not covered.

Care and Maintenance

Frame: Simply hose off or wipe down your frame to clean it! Avoid using harsh cleaners, brushes, or power washers, which could damage the finish. Take extra care when placing your furniture in humid or coastal settings; accumulation of salts and other debris can cause damage to your frame.

Outdoor Fabric: Regular cleaning with mild soap and water will help prevent the build-up of dirt, which can generate mildew. Simply spot-treat stains with mild soap and water, rinse, and allow the fabric to air dry. For more information, please visit the fabric manufacturer's website.

Tilt & Storage: Avoid using the tilt function during windy weather and try not to force the ribs apart when opening; this could damage your umbrella. Don't forget to store it ahead of a storm! Frankford Umbrellas have been tested successfully in extreme weather and winds up to 40-50 MPH, however, we strongly recommend closing your umbrella when not in use or when sustained winds exceed 25 mph.

About the Manufacturer

Frankford Umbrellas has been in the shade business for 121 years, providing superior quality umbrellas to the contract and retail industries since 1898. We are a dynamic and thriving company in the outdoor living industry, specializing in modern and traditional shade solution designs.

The beauty, design, and superior elements of our umbrellas bring enhanced resort and dining experiences to your cherished outdoor living space. We use only the best materials in manufacturing our umbrellas, and we are proud to build them right here in the United States. Our umbrellas are built to last, and are truly the best in the industry. We believe in providing our partners an exceptional product, at a reasonable price, with superior customer service.

Additional Information

| | |
|----------------------|---|
| SKU | 854FM-WH |
| Brand | Frankford |
| Ships Out Estimate | 1 - 2 Weeks |
| Residential Warranty | Frame: 5 Years Finish: 3 Years Fabric: 10 years |

Quick Ship Monterey Aluminum 9' Pulley Lift Octagon Umbrella Alpine White Frame 854FM-WH by Frankford Umbrellas

was
\$600.00 Special
Price
\$510.00

