



# PATIO PRODUCTIONS

Patio Productions San Diego

2161 Hancock St

San Diego, CA 92110

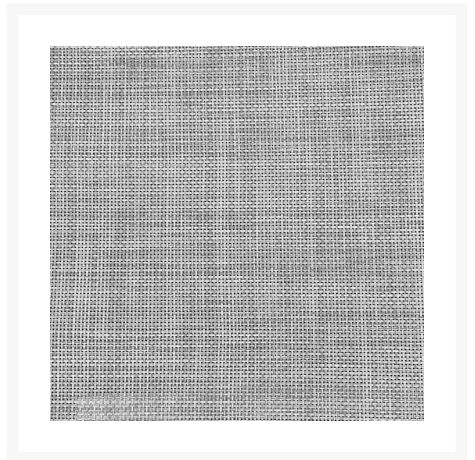
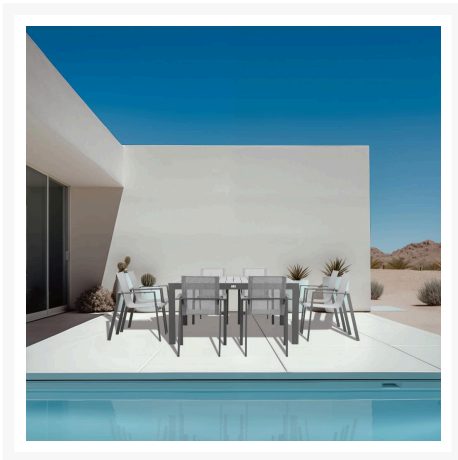
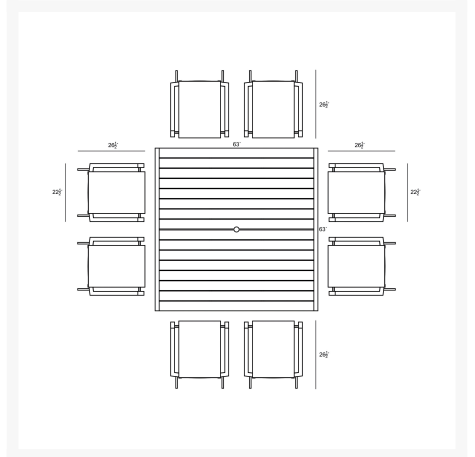
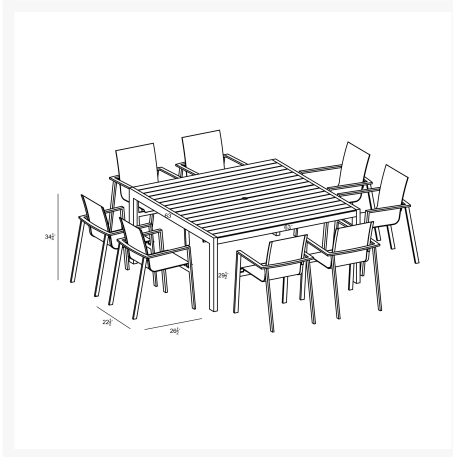
Phone: 1-888-947-4449

---

## Product Images

---





## Short Description

Lift Classic 8 Seat Square Dining Set - Slate/Slate LIFT-SL-SET561 by Harmonia Living

## Description

The sleek and modern Lift Classic 8 Seat Square Dining Set - Slate/Slate (LIFT-SL-SET561) by Harmonia Living is a savvy, versatile choice for your outdoor space. Dismissing both the ordinary and the extravagant, the Lift Chair's simple, chic style and bold finish fit most any palette and decor. A floating seat design adds a hint of

elegance, and interest. Its fully-welded aluminum frames are treated with a powder-coated finish to ensure lasting performance across the seasons. Enjoy an easy-to-maintain seat made of soft Texteline sling material and a supportive backrest. Storing or transporting your chairs is easy and seamless with its stackable design. The Classic Aluminum table evokes the beautiful horizontal simplicity of modern architectural lines. A design-forward combination of the sleek aluminum frame with a slat-style table top provides the perfect complement to any outdoor setting, from beach-side deck to urban rooftop. Harmonia Living can be tailored to both Residential and Commercial settings and is committed to delivering exceptional furnishings to your outdoor space.

#### Includes

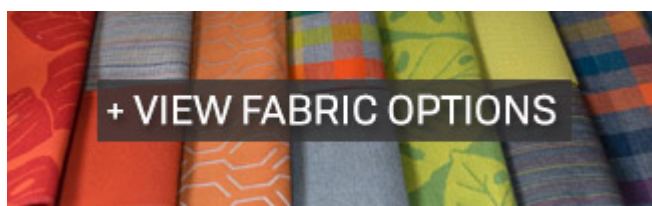
- Eight (8) Lift Dining Arm Chairs HL-LIFT-SL-DAC-DW
- One (1) Classic Aluminum 8-Seater Square Dining Table CSAL-SL-8SQDT

#### Dimensions

- Classic 8-Seater Square Dining Table: 63"W x 63"D x 29.5"H (80 lbs.)
  - Frame Height: 29.5
- Lift Dining Arm Chair: 22.5"W x 26.5"D x 34.25"H (6 lbs.)
  - Frame Height: 34.25
  - Seat Height (No Cushion): 17.75
  - Back Height: 16.5
  - Arm Height: 25.25

#### Features

- Durable, rust proof frames made from thick gauge aluminum with a high-quality powder coated finish that is appropriate for residential and commercial settings.
- Comfortable, quick-drying sling fabric.
- Pre-cut umbrella hole fits umbrellas with a pole diameter up to 1.5" and includes a matching umbrella hole cover.
- Stackable design makes storage and transportation easy.
- Plastic foot glides help to protect your patio from scratching and also to help keep the furniture protected from dirt or water that can accumulate on the patio.
- Chairs do not require assembly, table requires assembly



#### Warranty

Harmonia Living's warranty covers manufacturing defects; normal wear and tear is not included. With a little bit of care, your furniture will outlive the warranty for many years.

- Aluminum Frame: Harmonia Living extends a 3-year residential / 1-year commercial warranty against defects in workmanship and materials that cause structural failure
- Finish: Harmonia Living extends a 1-year residential and commercial warranty against defects such as peeling, cracking, or extreme discoloration
- Sling: Harmonia Living extends a 1-year residential / 90-day commercial warranty against defects in workmanship and materials that cause structural failure

#### Care and Maintenance

Frame: Simply hose off or wipe down your frame to clean it! Avoid using harsh cleaners, brushes, or power washers, which could damage the finish. Take extra care when placing your furniture in humid or coastal settings; accumulation of salts and other debris can cause damage to your frame.

Sling: In order to protect from getting stains and keep its appearance, wipe down with a damp cloth using a soap and water mixture every few weeks. To remove any mold, rinse the furniture with water and gently scrub with a brush.

Covers & Storage: When not in use, we recommend using a protective cover with your furniture. During harsh weather and extreme temperatures, we recommend storing the cushions in a shed or garage and covering the frames with protective covers. If you store the frames indoors during the winter, avoid storing them upside down, which can trap moisture.

About the Manufacturer

Harmonia Living - an integration of beauty, function and durability. For over 15 years, Harmonia Living has strived to represent versatility and unparalleled value in every collection it designs and manufactures. Originally conceived from a vision to integrate elegant, high-end styles with approachable prices, Harmonia Living has grown from a small company based in San Diego, California to one that services the contiguous United States. Harmonia Living is committed to delivering outstanding service and exceptional indoor and outdoor furnishings to bring people together.

Additional Information

SKU	LIFT-SL-SET561
Brand	Harmonia Living
Ships Out Estimate	3 - 5 Business Days
Residential Warranty	Aluminum Frame 3 Years Finish: 1 Year Sling: 1 Year
Fabric	<a href="#">Performance Fabric Choices</a>

Lift Classic 8 Seat Square Dining Set -  
Slate/Slate LIFT-SL-SET561 by  
Harmonia Living

was  
\$3,535.00 Special  
Price  
\$2,177.10

