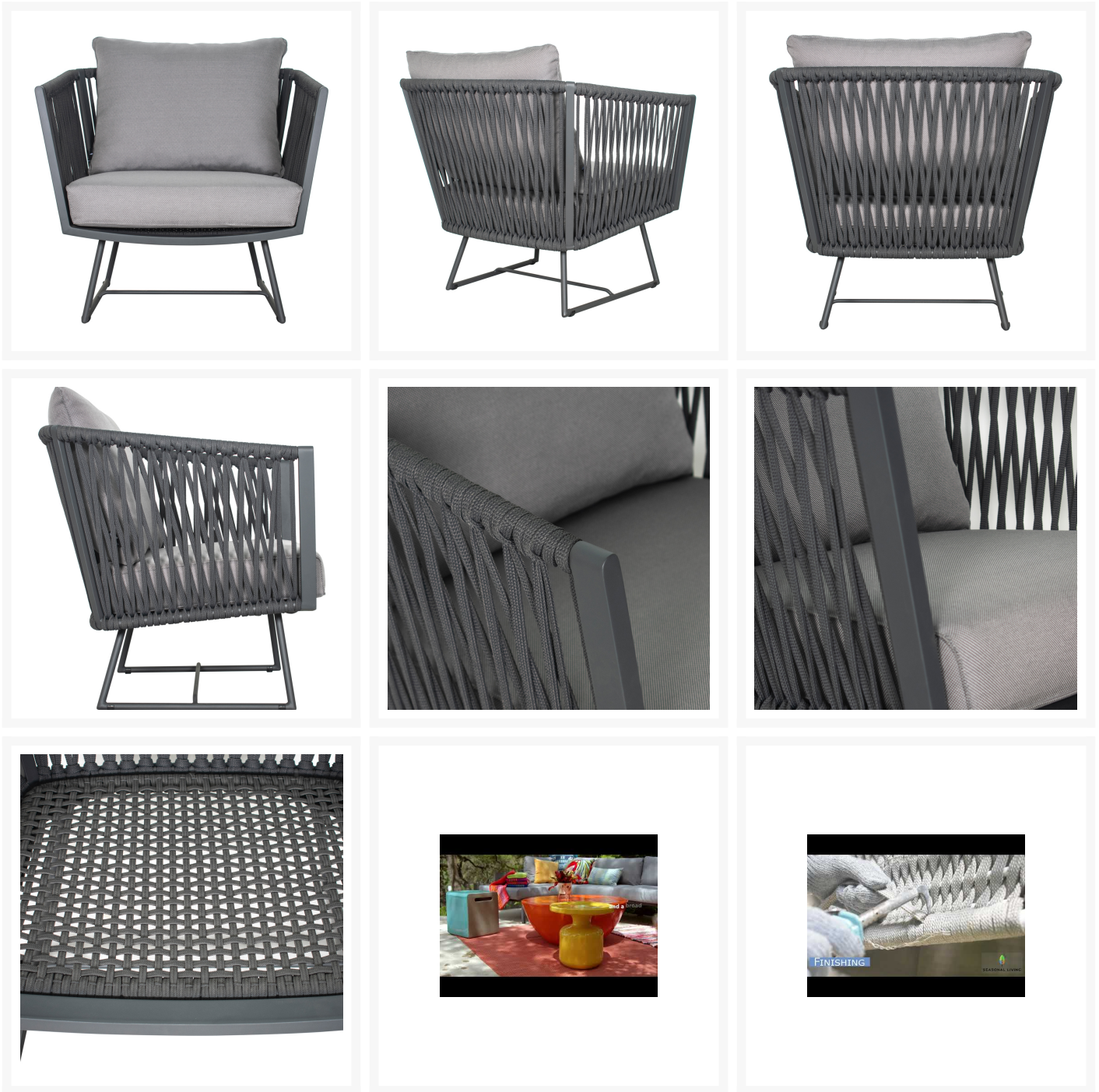


---

## Product Images

---





## Short Description

Archipelago Orion Lounge Chair 620FT080P2DGP by Seasonal Living

## Description

Enjoy refined coastal style with the Archipelago Orion Lounge Chair (620FT080P2DGP) by Seasonal Living. Inspired by the Indonesian Archipelago's island atmosphere and heritage of weaving, this collection offers artfully detailed designs. The elegant rope wrapping is made with Polypropylene, which provides a strong,

water-resistant hold. Underneath, a rust-proof aluminum frame holds it all together. All of these materials are 100% recyclable, ensuring resilience to weather and well-being for the earth. Sink into these plush, quick-drying cushions and indulge in airy comfort.

#### Includes

- One (1) Archipelago Orion Lounge Chair 620FT080P2DGP

#### Dimensions

- Overall Dimensions: 34"W x 31"D x 30.5"H (30.5 lbs.)
- Seat Dimensions: 26"W x 24"D x 16"H
- Arm Height: 28"

#### Features

- Powder-coated aluminum frame is lightweight, durable and rust proof
- Polypropylene rope weave is resistant to staining, mildew, abrasion and sunlight
- Quick-drying cushion foam is protected with a raincoat finish for water resistance
- Zip-off cushion covers are made with all-weather Texsilk fabric and are completely recyclable
- Nylon feet glides help protect your deck
- No assembly required

#### Warranty

Seasonal Living's limited warranty covers manufacturing defects; normal wear and tear is not included. With a little bit of care, your furniture will outlive the warranty by many years.

- **Frame:** The frame is warrantied to be free of manufacturing structural defects for a period of three (3) years from original purchase date.
- **Cushions:** Cushion cores are warrantied for a period of one (1) year from date of delivery.
- **Woven Materials:** Synthetic woven polyester and Olefin cushion cover fabrics are warrantied to be free from defects of cracking, peeling or breaking for one (1) year from the date of delivery.

#### Care and Maintenance

**Frame:** Simply hose off or wipe down your frame to clean it! Avoid using harsh cleaners, brushes, or power washers, which could damage the finish. Take extra care when placing your furniture in humid or coastal settings; accumulation of salts and other debris can cause damage to your frame.

**Rope:** Seasonal Living crafts their rope furniture out of Polypropylene, which is all-weather and fade-resistant. To clean, simply wash it with a soft brush or sponge with mild soapy water. Rinse well and allow to completely air dry. Do not use solvents or abrasives, or chemical cleaning products that could damage the furniture. Do not pull hard on the material as it can be stretched out of shape.

**Cushions & Outdoor Fabric:** Regular cleaning with mild soap and water will help prevent the build-up of dirt, which can generate mildew. Simply spot treat stains with mild soap and water, rinse, and allow the fabric to air dry. Cushions will dry at a much faster rate when removed from the frames and placed on their sides or edges. For more information, please visit the fabric manufacturer's website.

**Covers & Storage:** When not in use, we recommend using a protective cover with your furniture. During harsh weather and extreme temperatures, we recommend storing the cushions in a shed or garage and covering the frames with protective covers. If you store the frames indoors during the winter, avoid storing them upside down, which can trap moisture.

#### About the Manufacturer

Having lived in Kenya, Spain, France, Hong Kong, Singapore, Indonesia, and the United Kingdom while working in the financial, marketing and international hospitality trades, Seasonal Living founders were exposed to a myriad of unique in and outdoor living experiences. Inspired by these experiences, they noticed that beautiful, decorative accessories and furnishings were either too expensive or too limited in scope. They saw a market for comfortable, special in and outdoor living accessories that were fresh and affordable. By focusing on functional works of art that blur the line between indoor and outdoor furnishings, Seasonal Living has become the one-stop resource for retailers, landscape architects, spa planners, interior designers, property developers, and the like looking for unique and unusual product lines.

## Additional Information

SKU	620FT080P2DGP
Brand	Seasonal Living
Ships Out Estimate	1 - 2 Weeks
Residential Warranty	Frame: 3 Years Weave & Cushions: 1 Year

# Archipelago Orion Lounge Chair 620FT080P2DGP by Seasonal Living

was  
**\$2,880.00** Special  
Price  
**\$2,592.00**

