



# PATIO PRODUCTIONS

Patio Productions San Diego

2161 Hancock St

San Diego, CA 92110

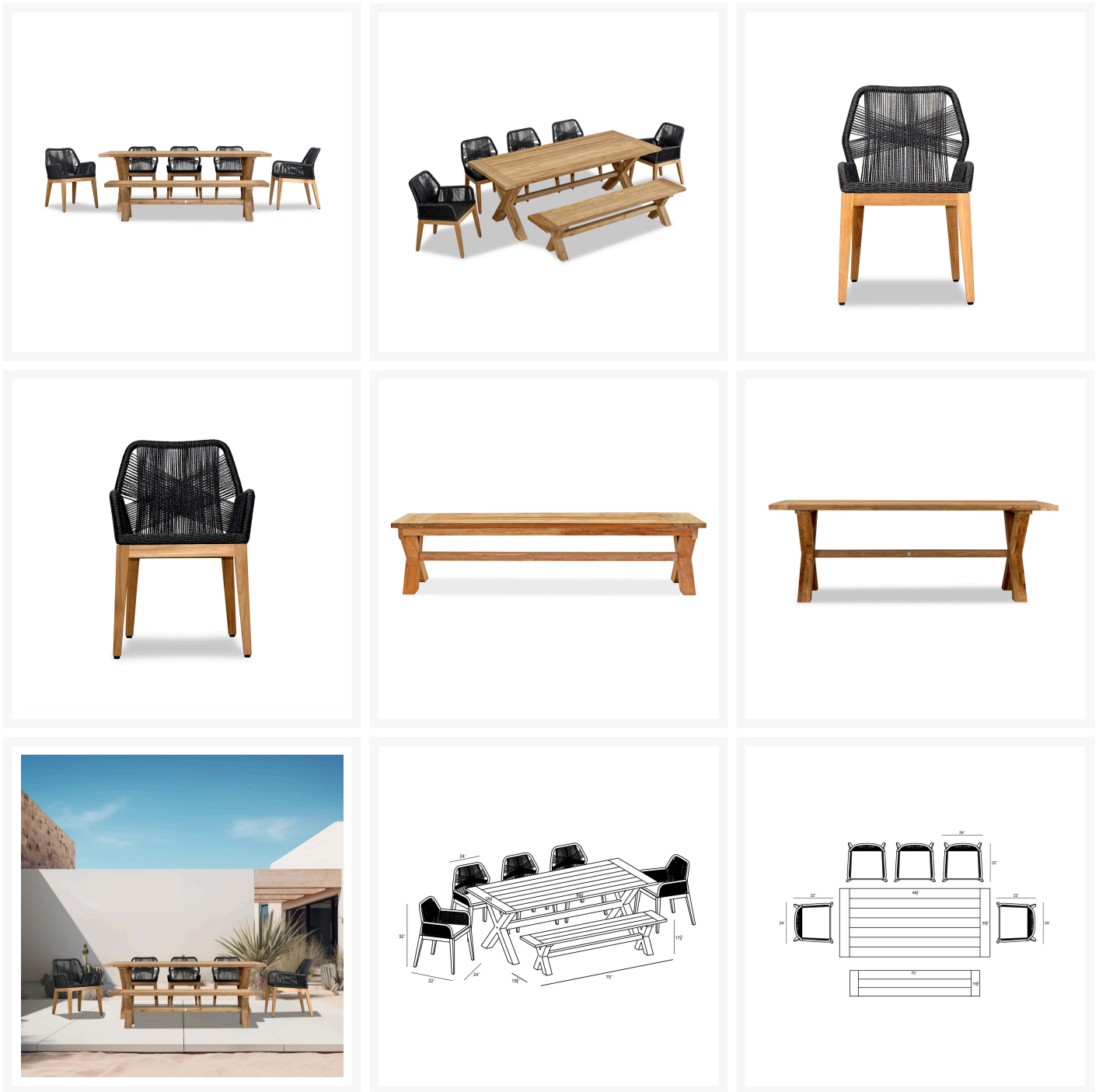
Phone: 1-888-947-4449

---

## Product Images

---





## Short Description

Carl Fields 8 Seat Reclaimed Teak and Rope Dining Set with Bench CARL-TK-SET580 by Harmonia Living

## Description

The Carl Fields 8 Seat Reclaimed Teak and Rope Dining Set with Bench (CARL-TK-SET580) by Harmonia Living is a blend of intricate rope design and repurposed old-growth teak. The rope itself is twisted strands of high-density polyethylene (HDPE) and crafted to form a sturdy, yet comfortable seat. This timeless piece of

outdoor furniture is built to the highest quality and comfort while ensuring lasting performances across the seasons. Handcrafted by the hands of skilled artisans, the pieces were repurposed from 100% FSC Certified®, Indonesian reclaimed teak. No new trees were harvested to make this furniture and every piece will add a unique work of art to your outdoor patio space. Harmonia Living can be tailored to both Residential and Commercial settings and is committed to delivering exceptional furnishings to your outdoor space.

#### Includes

- Two (2) Carl Dining Arm Chairs CARL-RP-DAC
- Three (3) Carl Dining Side Chairs CARL-RP-DSC
- One (1) Fields Dining Bench FLD-TK-74BNCH
- One (1) Fields Dining Table FLD-TK-86RCTD

#### Dimensions

- Fields Dining Table: 86.5"W x 39.5"D x 30"H (156 lbs.)
  - Frame Height: 30
  - Under Table Height: 29
- Carl Dining Arm Chair: 24"W x 22"D x 32"H (18 lbs.)
  - Frame Height: 32
  - Seat Height (No Cushion): 18.75
  - Back Height: 13.25
  - Arm Height: 25
- Carl Dining Side Chair: 24"W x 22"D x 32"H (18 lbs.)
  - Frame Height: 32
  - Seat Height (No Cushion): 18.75
  - Back Height: 13.25
  - Arm Height: 21.25
- Fields Dining Bench: 15.75"W x 75"D x 17.25"H (71 lbs.)
  - Frame Height: 17.25
  - Seat Height (No Cushion): 17.25

#### Features

- 100% FSC certified Indonesian reclaimed teak is repurposed into high quality outdoor furniture.
- Each piece is a unique work of art, handcrafted by skilled artisans who are masters working with reclaimed teak.
- Made from reclaimed from deconstructed buildings and bridges, there is no harvesting of new teak trees to make this furniture.
- Teak is dense hardwood that is naturally oily which offers benefits over other natural woods including resistance to light, heat, moisture and pest damage.
- New teak wood furniture will have a warm golden hue that patinas to a silvery grey over time. Letting the teak patina will not compromise the integrity of the wood, however, to keep the golden color, clean the teak furniture about once a year and apply a thin layer of teak oil.
- High quality outdoor roping is woven onto an aluminum upper chair frame with natural teak wood legs for a stylish look.
- Plastic foot glides help to protect your patio from scratching and also to help keep the furniture protected from dirt or water that can accumulate on the patio.
- Chairs and table require assembly

#### Warranty

Harmonia Living's warranty covers manufacturing defects; normal wear and tear is not included. With a little bit of care, your furniture will outlive the warranty for many years.

- HDPE Rope: Harmonia Living extends a 2-year residential / 1-year commercial warranty against structural failure, finish fading, or cracking.
- Teak: Harmonia Living extends a 1-year residential / 90-day commercial warranty against defects in workmanship and materials

Care and Maintenance

HDPE Rope: To clean HDPE wicker, rinse with cool water, and use a cloth with mild dish soap to wipe down and remove dust and residue. Use cool water to wipe away any soapy residue. Dry with a soft cloth.

Teak: Long-term, teak furniture develops a pleasing silvery gray patina, which is cosmetic and not an indication of dryness. Its natural oils help keep this hardwood strong and durable in a variety of environments, so there's very little maintenance. Because teak is very weather-resistant, it doesn't need to be stored during the winter or covered with protective tarps. However, covering teak furniture will protect the surface from elements such as hail, wind, and snow, which can cause cosmetic damage. To keep the original golden honey finish, apply a very thin layer of Linseed or Teak oil to your furniture 1-2 times a year, depending on exposure. Cleaning with teak cleaner is recommended every 2-3 years, along with the oil application.

About the Manufacturer

Harmonia Living - an integration of beauty, function and durability. For over 15 years, Harmonia Living has strived to represent versatility and unparalleled value in every collection it designs and manufactures. Originally conceived from a vision to integrate elegant, high-end styles with approachable prices, Harmonia Living has grown from a small company based in San Diego, California to one that services the contiguous United States. Harmonia Living is committed to delivering outstanding service and exceptional indoor and outdoor furnishings to bring people together.

Additional Information

SKU	CARL-TK-SET580
Brand	Harmonia Living
Ships Out Estimate	3 - 5 Business Days
Residential Warranty	HDPE Rope: 2 Years Teak: 1 Year

Carl Fields 8 Seat Reclaimed Teak and Rope Dining Set with Bench CARL-TK-SET580 by Harmonia Living

was  
**\$5,675.00** Special  
Price  
**\$3,446.10**

