



PATIO
PRODUCTIONS

Patio Productions San Diego

2161 Hancock St

San Diego, CA 92110

Phone: 1-888-947-4449

Product Images



Standard Finishes



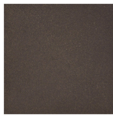
Matte Black



Matte Gunmetal



Matte White



Rich Earth

CASTELLE

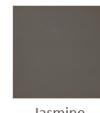


the CASTELLE DIFFERENCE

- 1 Premium certified aluminum alloy extrusions
- 2 Reinforced tack welding for lasting durability
- 3 State-of-the-art Foundry techniques ensure industry-leading quality cast aluminum products
- 4 Seamless 300 degree welds for invisible and resistant joints
- 5 Architectural grade powder coating applied during the finishing process for a durable, long lasting beauty
- 6 Hand applied custom finishes with UV resistant clear coating
- 7 Blown polyester silicone fibers fill the 100% acrylic cushions for ultimate comfort and durability
- 8 Hand sewn and tailored custom fabrics ensure perfect detailing
- 9 Polyester fiber wrap dense urethane foam seat cushions for ultimate comfort and durability

CASTELLELUXURY.COM

Luxe Finishes



Jasmine



Platinum Tex



Polished White

Hand-Brushed Finishes



Brushed Oak (BO)



Brushed Pecan (BP)



Cast Iron (CI)



Dark Rum Gold (DG)



Restoration Ivory (RI)



Weathered Ash (WA)



Weathered Gray (WG)



Weathered Mahogany (MA)



Weathered Wood (BW)

Antique Finishes



Auburn



Black



Black Walnut



Dark Rum



Mahogany

Cast Aluminum



Artisan (AR)



Forged (FF)



Reclaimed Wood (FA)



Sunburst (BU)

Live Edge Tops



Dark Rum with Driftwood



Weathered Wood with Walnut



Mahogany with Walnut



Cast Iron



Birch

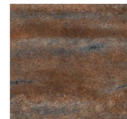


Weathered Ash

Aluminum Slate Finishes



Polaris



Bronze



Natural



Earth

Woodgrain Finishes



Dark Rum



Cast Iron



Mahogany



Weathered Wood



Birch



Ash

Short Description

Biltmore Antler Hill Square Side Table A0SS20

Description

The Biltmore Antler Hill Square Side Table (A0SS20) by Castelle is designed to showcase the flavor and elegance of old world styling. The Antler Hill Collection's beautiful line detail and ageless charm will bring a warm, rustic vibe to any outdoor space. With a wide variety of heavy duty wood or stone-look tops and hand-

painted powder coat base finishes to choose from, you can customize this piece to perfection. Castelle only uses the best all weather frame materials, so you can enjoy all year without worrying about weather or maintenance.

Includes

- One (1) Biltmore Antler Hill Square Side Table A0SS20

Dimensions

- W x 42" D x 42" H x 24"
- Weight: 21 lbs.

Features

- Aluminum frames are durable, low-maintenance, and rust-proof
- Optional cast aluminum table detailing is crafted by hand for a truly one-of-a-kind look
- Multi-stage powder-coat finish is baked on to lock in color and all-weather frame protection
- Nylon feet glides protect your furniture and deck from getting scratched
- Made in Puerto Rico, USA
- This table does not come with an umbrella hole
- Frames come fully welded, so no assembly is needed
- Castelle brand requires all Castelle patio furniture deliveries to include White Glove delivery service. This service includes assembly, placement of the furniture on your patio, and removal of packaging. This elevated delivery service is beyond what is included in our "Free Shipping" and requires an additional charge which will be automatically calculated and applied during checkout. Please contact us with any questions or concerns regarding White Glove delivery and associated fees. Depending on the size and location of your order we may be able to waive these fees.

Castelle Designer Details

Cast Aluminum Details: Casting is the process where melted metal is poured into molds to create distinctive shapes and designs. Castelle uses this handcrafted process to engineer the intricate aluminum detailing found on their frames. The delicate nature of the molds and hand-poured aspect of this process demands expert craftsmanship, but it results in a one-of-a-kind creation.

Warranty

Castelle's warranty covers manufacturing defects; normal wear and tear is not included. With a little bit of care, your furniture will outlive the warranty by many years.

- Frame: 15 Years Residential
- Finish: 5 Years Residential

Care and Maintenance

Frame Care: Regular cleaning with a mild soap and water solution is recommended. Avoid using harsh cleaners, brushes or power washers, which could damage the finish. Regular maintenance of the furniture will extend its life and will keep it looking beautiful. For more information, please see the Care & Maintenance PDF.

Covers & Storage: To prolong the life of your furniture, we recommend using a protective cover. In areas with harsh winter climate, store the cushions inside of a garage or shed, and cover the frames to prevent damage.

About the Manufacturer

For over 40 years, the Castelle name has stood for handcrafted luxury furnishings. Many skilled hands are involved in crafting some of the highest quality, most luxurious outdoor furniture on the market, which sets

Castelle apart from the rest.

From our hands to your home, each Castelle product is handcrafted, one piece at a time, by the most skilled artisans in the industry. Our ability to hand-cast aluminum with a multi-stage powder coat finish into durable works of art will transform your outdoor living space for many seasons to come.

Whatever your design style, our goal is to provide outdoor furniture that is a personal reflection of you. Castelle offers the ability to customize collections to fit your outdoor furniture vision. With an array of top-quality finish, fabric, tabletop, and accessory options, you can create your own one-of-a-kind outdoor space. Beautiful enough to live indoors, tough enough to live outdoors, experience luxury and craftsmanship at its best with Castelle.

Additional Information

SKU	A0SS20
Brand	Castelle
Ships Out Estimate	6 - 7 Weeks
Residential Warranty	Frame: 15 Years Residential Finish: 5 Years Residential

Biltmore Antler Hill Square Side Table A0SS20 by Castelle

was
\$1,234.00 Special
Price
\$863.80

