

## Product Images



### Standard Finishes



Matte Black



Matte Gunmetal



Matte White



Rich Earth

### CASTELLE

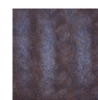


#### the CASTELLE DIFFERENCE

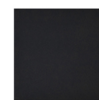
- 1 Premium certified aluminum alloy extrusions
- 2 Reinforced tack welding for lasting durability
- 3 State-of-the-art foundry techniques ensure Industry-Leading quality cast aluminum products
- 4 Seamless 360 degree welds for invisible and resistant joints
- 5 Architectural grade powder coating applied during the finishing process for a durable, long lasting beauty
- 6 Hand applied custom finishes with UV resistant clear coating
- 7 Blown polyester silicone fibers fill the 100% acrylic cushions for ultimate comfort and durability
- 8 Hand sewn and tailored cushion fabrics ensure perfect detailing
- 9 Polyester fiber wrap dense urethane foam seat cushions for ultimate comfort and durability

LEAD BY DESIGN  
CASTELLELUXURY.COM

### Antique Finishes



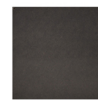
Auburn



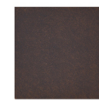
Black



Black Walnut



Dark Rum



Mahogany



## Short Description

Park Place Cushioned Double Chaise Lounge 2252T

## Description

Take modern design to luxury limits with the Park Place Cushioned Double Chaise Lounge (22 52T) by Castelle. The Park Place Collection defines luxury outdoor living through enhanced comfort and engineered precision. The elegance of clean lines, crisp angles and tailored seating come together for a perfectly balanced seating experience. With a wide variety of top-of-the-line outdoor performance fabrics and hand-painted powder coat finishes to choose from, you can customize this piece to perfection. Castelle only uses the best all weather frame materials and cushions, so you can enjoy all year without worrying about weather. If you can't find the fabric you're looking for, feel free to give our sales team a call at (888) 947-4449!

### Includes

- One (1) Park Place Cushioned Double Chaise Lounge 2252T

### Dimensions

- W 54" x D 84" x H 46.5"
- Seat Height (With Cushion): 22"
- Arm Height: 25"
- Weight: 83 lbs.

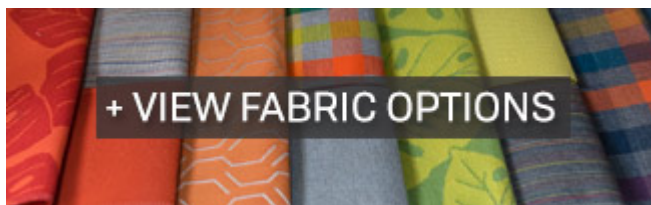
### Features

- Aluminum frames are durable, low-maintenance, and rust-proof
- Multi-stage powder-coat finish is baked on to lock in color and all-weather frame protection
- Frames come fully welded, so no assembly is needed
- Standout performance fabric brands like Sunbrella, Outdura and Bliss are easy to clean and carry a 5 year fade warranty
- All outdoor fabrics and slings have been factory treated to resist stains and mildew
- Quick drying foam ensures moisture doesn't stay trapped in the cushion
- Nylon feet glides protect your furniture and deck from getting scratched
- Made in Puerto Rico, USA

- Castelle brand requires all Castelle patio furniture deliveries to include White Glove delivery service. This service includes assembly, placement of the furniture on your patio, and removal of packaging. This elevated delivery service is beyond what is included in our "Free Shipping" and requires an additional charge which will be automatically calculated and applied during checkout. Please contact us with any questions or concerns regarding White Glove delivery and associated fees. Depending on the size and location of your order we may be able to waive these fees.

### Castelle Designer Details

Welted Cushions: Welt goes by several names. It can be called a welt trim, welt cord, welt piping, or simply welting. It is the decorative trim around the edges of a cushion to give the cushions a more finished look. A thin piece of cord or piping is wrapped in fabric and sewn to the seams of a cushion. It serves two primary functions. The first is functional, helping to strengthen and protect the seams of the cushion. The second is visual. Welt gives cushions a more finished look and emphasizes the shape of the cushion. Welt that matches the color of the cushion fabric is called a "matching" or "self" welt. Welt that is a different color than the color of the cushion fabric is called a "contrast" welt.



### Warranty

Castelle's warranty covers manufacturing defects; normal wear and tear is not included. With a little bit of care, your furniture will outlive the warranty by many years.

- Frame: 15 Years Residential
- Finish: 5 Years Residential
- Cushions: 2 Years Residential
- Fabric: 5 Years

### Care and Maintenance

**Frame Care:** Regular cleaning with a mild soap and water solution is recommended. Avoid using harsh cleaners, brushes or power washers, which could damage the finish. Regular maintenance of the furniture will extend its life and will keep it looking beautiful. For more information, please see the Care & Maintenance PDF.

**Cushion Care:** Regular cleaning with mild soap and water will help prevent build-up of dirt, which can generate mildew. Simply spot treat stains with mild soap and water, rinse, and allow the fabric to air dry. Cushions will dry at a much faster rate when removed from the frames and placed on their sides or edges. For more information, please visit the fabric manufacturer's website.

**Covers & Storage:** To prolong the life of your furniture, we recommend using a protective cover. In areas with harsh winter climate, store the cushions inside of a garage or shed, and cover the frames to prevent damage.

### About the Manufacturer

For over 40 years, the Castelle name has stood for handcrafted luxury furnishings. Many skilled hands are involved in crafting some of the highest quality, most luxurious outdoor furniture on the market, which sets Castelle apart from the rest.

From our hands to your home, each Castelle product is handcrafted, one piece at a time, by the most skilled artisans in the industry. Our ability to hand-cast aluminum with a multi-stage powder coat finish into durable works of art will transform your outdoor living space for many seasons to come.

Whatever your design style, our goal is to provide outdoor furniture that is a personal reflection of you. Castelle offers the ability to customize collections to fit your outdoor furniture vision. With an array of top-quality finish, fabric, tabletop, and accessory options, you can create your own one-of-a-kind outdoor space. Beautiful enough to live indoors, tough enough to live outdoors, experience luxury and craftsmanship at its best with Castelle.

### Additional Information

SKU	2252T
Brand	Castelle
Ships Out Estimate	6 - 7 Weeks
Residential Warranty	Frame: 15 Years Residential Finish: 5 Years Residential Cushions: 2 Years Residential Fabric: 5 Years
Fabric	<a href="#">Performance Fabric Choices</a>

## Park Place Cushioned Double Chaise Lounge 2252T by Castelle

was  
\$4,957.00 Special  
Price  
\$3,469.90

