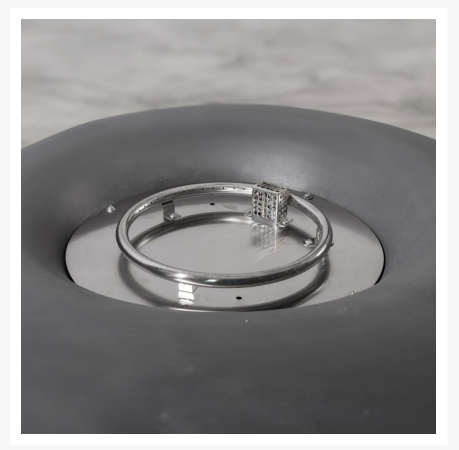

Product Images





Short Description

Monument Fire Table MN-CH/SL by Pyromania

Description

The Monument Fire Table (MN-CH/SL) by Pyromania is a breeze to style around any combination of chairs and sofas. The mid-century design of the Avalon makes for a beautiful centerpiece that not only looks good, but keeps you warm. Made from glass fiber reinforced concrete (GFRC), the fire table is durable and made to last. Available in multiple colors, the Avalon is an excellent choice for entertaining guests and keeping the night going.

Includes

- One (1) Monument Fire Table
- One (1) Weatherproof Canvas Cover
- Four (4) 3" Aluminum Legs LEG-AL3
- Media of Your Choice

Features

Manufacturer	Pyromania
Model	Monument
SKU	MN-CH/SL
Dimensions	41"W x 41"D x 15"H (with 3" legs)
Weight	190 lbs.
Frame Material	Glass Fiber Reinforced Concrete (GFRC)
Available Colors	Charcoal Grey, Slate Grey
Certification	CSA listed
Heat Output	50,000 BTU
Fuel Type	Natural Gas, Propane
Ignition	Requires 1.5V Battery (Not Included)
Warranty	1 Year Limited Warranty

Features

- An electronic ignition for easy start-ups and includes an automatic flame-out shut-off valve to ensure safe operation every time.
- Burn-time from the propane/air mixer burns clean at up to 10 hours on a single 20 pound tank.
- Choose from natural gas or propane. Includes a 10' quick connect hose.

- Satin finish aluminum hardware to contrast the matte finished concrete.
- Aluminum legs provide extra height, better ventilation underneath firepit, and can be adjusted to ensure level placement on uneven surfaces.
- Optional 30" Round Glass Wind Guard can be added to protect flames from strong winds.
- Protective cover will extend fire table's life by keeping debris and water out.

Warranty

- 1 Year Limited Warranty against manufacturing defects in parts and workmanship under normal use.
- There will be no charge for the replacement parts or product, however it will be the consumer's responsibility to return the product to the original place of purchase.

Care and Maintenance

Fire Table Body: Wipe exterior surfaces with a mild dish washing soap or baking soda, then rinse clean with water.

Stainless Steel Parts: For general cleaning use warm water, soap, ammonia, or detergent apply with a soft cloth or sponge. For finger prints or smears use heavy duty window cleaner. For stubborn stains and discoloration use stainless steel cleaner and polish.

Minor chipping, weather fading, water staining and non-structural hairline cracks are typical of the material of this product and are not covered under this warranty. There will be no charge for the replacement parts or product, however it will be the consumer's responsibility to return the product to the original place of purchase.

About the Manufacturer

Pyromania is a design and manufacturing company that is dedicated to the social aspect of fire. Based in Southern California, we are blessed with the perfect weather and lifestyle for enjoying outdoor fireside entertainment. We have spent many years designing and developing all types of fire features. Items from 6,000 pound polished granite boulders to reclaimed metal and wood industrial style dining tables have all passed through our doors.

After years of honing our skills and understanding the retail market much better, we are now offering retail and semi-custom level fire tables. We may be biased, but our new lines are very much local inspired products. It is due to the diversity of the southern California lifestyle and it's influence on our new product lines. From the laid back vibe of San Diego, the kitschy mid-century modern style of Palm Springs and the hipster movement of the L.A. arts district. They are all etched into the design of our products.

Additional Information

SKU	MN-CH/SL
Brand	Pyromania
Ships Out Estimate	1 - 2 Business Days
Residential Warranty	1 Year Limited Warranty

Monument Fire Table MN-CH/SL by Pyromania

was

\$1,799.00 Special

Price

\$1,189.15

