



# PATIO PRODUCTIONS

Patio Productions San Diego

2161 Hancock St

San Diego, CA 92110

Phone: 1-888-947-4449

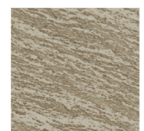
## Product Images



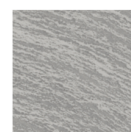
### AVAILABLE TOP COLORS



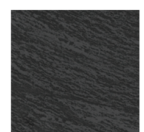
20 - SEQUOIA



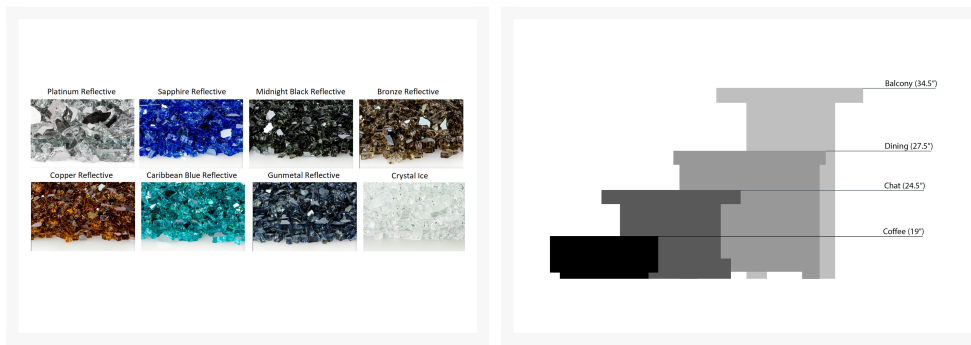
73 - DUNE



21 - DRIFT



70 - CHAR



## Short Description

---

Slate 42- Round Dining Fire Table 4642DSL by Homecrest

## Description

---

For those who seek subtle, refined beauty, the Slate 42" Round Dining Fire Table (4642DSL) by Homecrest is a clear choice. Flowing lines and sparkling flecks of mica are imitated in the faux-Slate table top. High-Density Polyethylene (HDPE) and tough resin core create a natural tabletop while a Nano-Coat finish is UV-protected and scratch resistant. The fully-welded aluminum frames are made to last while a multi-stage powder coat provides all-weather protection across all seasons. The fire pit includes a built-in storage compartment at the base that discretely stores the propane tank out of sight so you don't have to sacrifice your space. Place your plates and cups on the generously sized surface without any worry. Homecrest fire tables extend the comfortability of outdoor spaces by several months into the late Fall and early Spring. Built for commercial and residential use, this is a perfect piece to add to small patios, poolside decks, and high-traffic terraces.

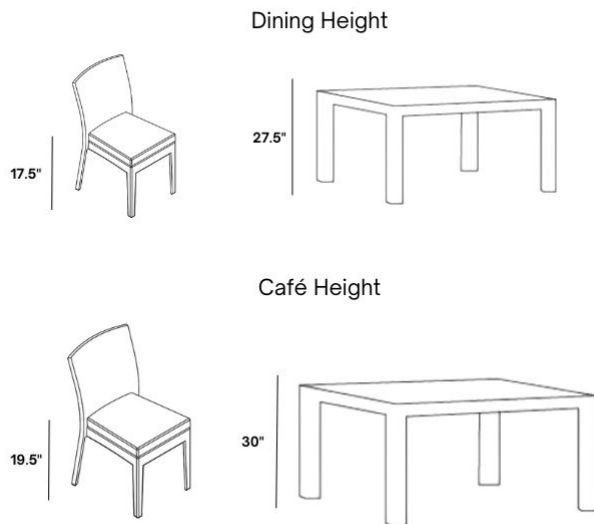
### Includes

- One (1) Slate 42" Round Dining Fire Table 4642DSL
- One (1) 20 lbs. Bag of Fire Jewelry Rocks

### Dimensions

- 42" W x 42" D x 27.5" H (115 lbs.)
- Burner Rise: 3/4" Rise

Differences in Dining and Cafe Heights:



**Dining Seating & Table Collections:** Most commonly used in casual outdoor seating areas, dining table pieces have an average height of 27.5" while dining seating has an average height of 17.5". Please be sure to select the corresponding dining table and seating heights to ensure a proper fit.

**Cafe Seating & Table Collections:** Most commonly used in restaurants, bars, and other active seating venues, cafe table pieces have an average height of 30" while cafe seating has an average of 19". Please be sure to select the corresponding cafe table and seating heights to ensure a proper fit.

*Please note: To ensure you have selected the correct height for your outdoor patio space, please call our sales team at 1-888-947-4449.*

#### Features

- Powder-coated aluminum frames are lightweight, durable, and rust proof
- Handcrafted tough resin core table tops are durable and made to withstand the outdoor elements
- Nano-Coat finish is UV-protected, low-maintenance, and resistant to dirt, water, and abrasions.
- Match-light Ignition system with removable key valve allows you to easily control the gas flow of your firepit
- Fire Table Output: 65,000 BTU
- Standard burner riser protects surface and allows the table to remain cool
- Enclosed propane storage compartment to fit a standard 20 lb. propane tank
- Premium commercial-grade materials ensure durability and longevity for both commercial and residential spaces
- Made in the USA
- Assembly Required

#### Warranty

Homecrest's warranty covers manufacturing defects; normal wear and tear is not included. With a little bit of care, your furniture will outlive the warranty for many years.

- Frame: 15 Year Residential / 5 Years Commercial warranty against structural failure or manufacturing defects
- Finish: 5 Year Residential and Commercial warranty against peeling, blistering, or cracking of the aluminum finish
- Natural Series: 3 Year Residential / 1 Years Commercial warranty against structural failure or manufacturing defects
- Fire Table Burners: 2 Year Residential / 1 Years Commercial warranty against structural failure or manufacturing defects

Care and Maintenance

Frame: Simply hose off or wipe down your frame to clean it! Avoid using harsh cleaners, brushes, or power washers, which could damage the finish. Take extra care when placing your furniture in humid or coastal settings; accumulation of salts and other debris can cause damage to your frame.

Covers & Storage: When not in use, we recommend using a protective cover with your furniture. During harsh weather and extreme temperatures, we recommend storing the cushions in a shed or garage and covering the frames with protective covers. If you store the frames indoors during the winter, avoid storing them upside down, which can trap moisture.

About the Manufacturer

Homecrest has been an iconic American brand, crafting durable, timeless outdoor furniture in the USA since 1953. Combining a rich history of quality and classic design with affordable luxury and versatile living, Homecrest's focus has broadened to encompass the increasing demands of sophisticated, style-driven consumers who seek to complement their homes, indoors and out. The latest Homecrest collections reflect this trend, highlighted by timeless frame designs and finishes, fashionable fabrics, and comfortable seating options. Homecrest's comprehensive line of affordable luxury outdoor patio furniture is offered in 30 collections and can be customized with an array of finish and fabric options. All products are manufactured in Wadena, Minnesota, USA.

Additional Information

SKU	4642DSL
Brand	Homecrest
Ships Out Estimate	4 - 5 Weeks
Residential Warranty	Frame: 15 Years Finish: 5 Years Natural Series: 3 Years Fire Table Burners: 2 Years

Slate 42" Round Dining Fire Table  
4642DSL by Homecrest

was  
\$4,780.00 Special  
Price  
\$4,063.00

