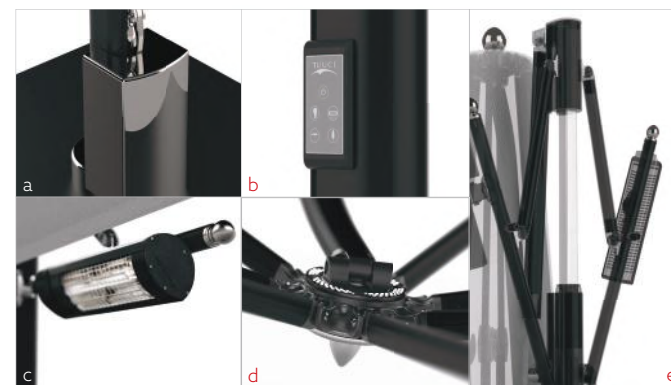


## AUTOMATED SINGLE AND DUAL MAX CANTILEVER

*TUUCI's Automated Single and Dual MAX Cantilever shade platforms redefine shade technology.* Automation and shade integrate seamlessly with our convenient and intuitive push-button interface. Shading, lighting, and heating come alive at your fingertips with a one-touch control panel featuring smart safety protocols. A whole new level of intelligent design has been reached.



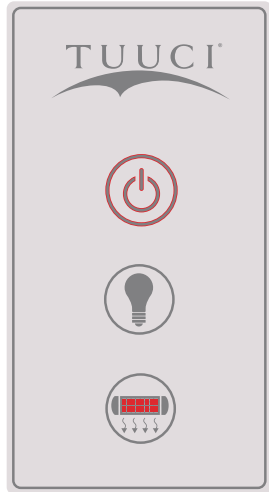
### Features:

- a. Control Box
- b. Push Button Control Makes It Easy To:
  - Open and Close the Canopy*
  - Turn On and Off the Luna LED Light*
  - Power Two Energy-Efficient Heaters*
- c. Energy-Efficient Infrared Radiant Heaters
- d. Luna LED Light Provides State-of-the Art Ambient Lighting
- e. Telescoping Mast Provides Ample Tabletop Clearance

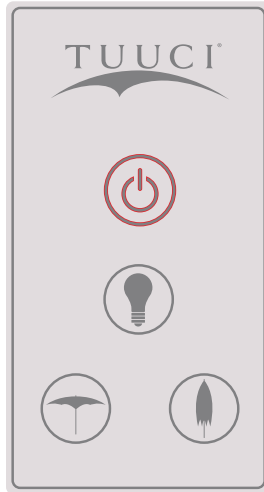
for more information visit [tuuci.com](http://tuuci.com)

## CONFIGURATION OPTIONS

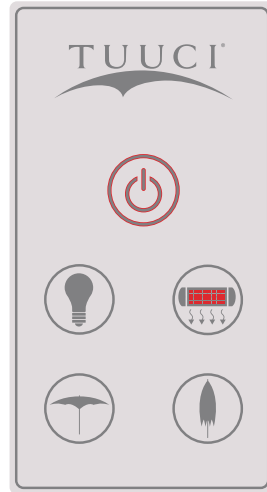
Automation to suit your individual needs. Choose from three pre-set configuration options available for both the Single and Dual MAX Cantilever.



LIGHT AND HEATERS



LIGHT AND AUTOMATION



LIGHT, HEATERS AND AUTOMATION

## FINISH OPTIONS

### ALUMA-TEAK™



natural



java



weathered



aspen white

### POWDER-COAT



textured bright white



sea shell white



ash grey



jet black



espresso



hammered bronze

## SHAPES & SIZES

### SINGLE CANTILEVER



#### Octagon

| ft.   | / | m.   |
|-------|---|------|
| 9.0'  | / | 2.75 |
| 11.0' | / | 3.4  |
| 13.0' | / | 4.0  |



#### Square

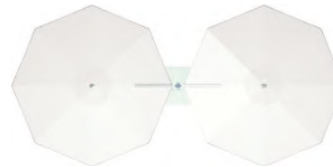
| ft.   | / | m.   |
|-------|---|------|
| 8.0'  | / | 2.45 |
| 10.0' | / | 3.0  |
| 12.0' | / | 3.65 |
| 13.0' | / | 4.0  |



#### Rectangle

| ft.       | / | m.          |
|-----------|---|-------------|
| 8' x 12'  | / | 2.45 x 3.65 |
| 10' x 14' | / | 3.0 x 4.25  |

### DUAL CANTILEVER



#### Dual - Octagon

| ft.           | / | m.         |
|---------------|---|------------|
| 9.0' x 18.0'  | / | 2.75 x 5.4 |
| 11.0' x 22.0' | / | 3.4 x 6.8  |
| 13.0' x 26.0' | / | 4.0 x 8.0  |



#### Dual - Square

| ft.           | / | m.         |
|---------------|---|------------|
| 8.0' x 16.0'  | / | 2.4 x 4.9  |
| 10.0' x 20.0' | / | 3.0 x 6.0  |
| 12.0' x 24.0' | / | 3.65 x 7.4 |
| 13' x 26.0    | / | 4.0 x 7.9  |



#### Dual - Rectangle

| ft.       | / | m.         |
|-----------|---|------------|
| 16' x 12' | / | 4.9 x 3.65 |
| 20' x 14' | / | 6.0 x 4.25 |