

KLCSS1 (shown with Sunbrella® Spectrum Indigo Fabric)



FEATURES

- Sunbrella® solution-dyed acrylic upholstery covers quick-drying reticulated foam
- Upholstery and frame designed to accommodate Customer's Own Material or Custom Fabric
- Components can be locked into any configuration or left open, providing the flexibility to be easily rearranged
- Leg end caps provide protection against marring and scratching of surfaces
- Arrives fully assembled
- Pair with other Koral modular products
- Low-maintenance and ideal for outdoor applications

MATERIALS

Powder-coated aluminum is durable and lightweight. Its rustproof nature ensures furniture will remain beautiful over its lifetime. Sunbrella® fabric is tactile yet durable, has industry-leading environmental characteristics, is easy to care for, and offers long life whenever it's used. Reticulated Foam has an open-cell structure that permits moisture and air to pass through more freely than other types of foam. Water runs straight through the foam, draining out the bottom to allow for quicker drying.

Seat Height	Assemb. Width	Assemb. Depth	Assemb. Height	Assemb. Weight Lbs.
15.5"	36.5"	36.5"	27"	34
Carton # of Boxes	Carton Width	Carton Depth	Carton Height	Carton Weight Lbs.
1	38"	39"	29"	43

CONSTRUCTION

Welded aluminum

HARDWARE

Stainless steel

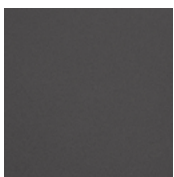
SHIPPING

Ships via LTL

ASSEMBLY

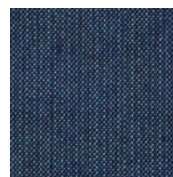
No assembly required

FRAME



CARBON C
POWDER COATED
ALUMINUM

QUICK SHIP UPHOLSTERY



SUNBRELLA® SI
SPECTRUM INDIGO
SOLUTION-DYED
ACRYLIC

QUICK SHIP LUMBAR PILLOW FABRIC



SALT SA
SOLUTION-DYED
OLEFIN

Quick Ship upholstery shown above. Optional lumbar pillow (1LP-02SA) sold separately, and available in the Quick Ship fabric shown above.

Upholstery and lumbar pillows also available in custom fabric or Customer's Own Material. Pricing and lead times will vary, please call customer service at 877.866.3331 or email sales@oxfordgarden.com.