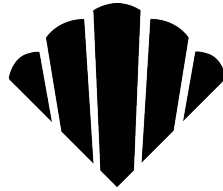


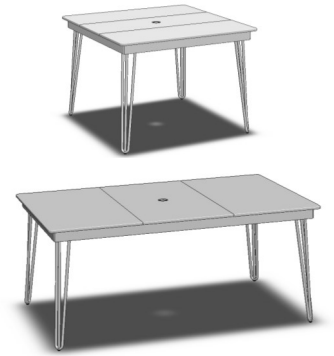
HIP TABLE

413

414



SEASIDE CASUAL



ASSEMBLY INSTRUCTIONS

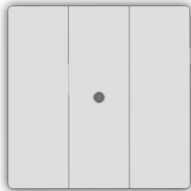
1

PLEASE READ INSTRUCTIONS COMPLETELY BEFORE BEGINNING.

Carefully remove contents from box. Make sure that all parts and hardware are included using the Parts List below.

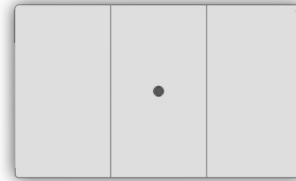
Tools Required: 5mm Allen Wrench (included); #2 Phillips Head Screwdriver;
(Recommended: Rubber Mallet; Power Drill)

TOP (413)



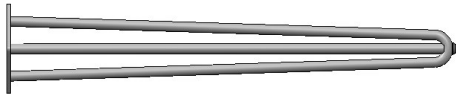
x 1

TOP (414)



x 1

HAIRPIN LEG



x 4

M6 SCREW

Actual Size



x 12

5mm ALLEN WRENCH

Actual Size



x 1

M6 SPLIT WASHER

Actual Size



x 12

M6 WASHER

Actual Size



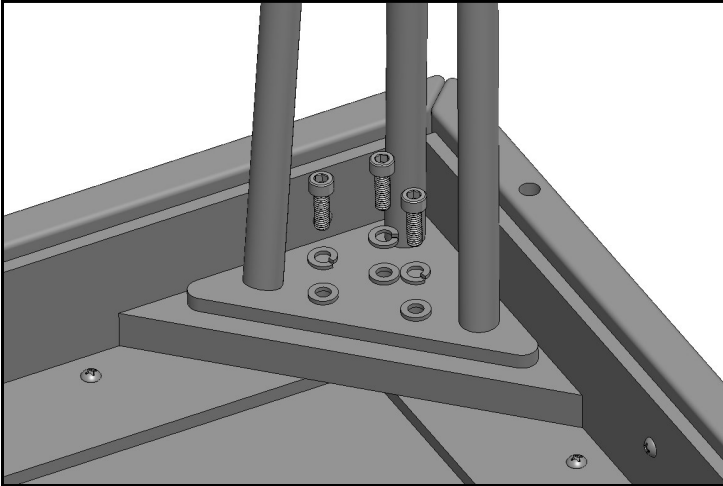
x 12

WARRANTY QUESTIONS OR COMMENTS PLEASE CALL TOLL FREE AT 1-800-809-3114

Seaside Casual Furniture | 11 Industrial Drive Coventry, RI 02816 | 800-809-3114 | sales@seasidecasual.com

2

ATTACH TOP TO LEGS



On a clean flat surface connect legs to Top using (3) M6 screws, Split Washers, and washers (AS SHOWN). Finger tighten. Repeat with remaining (9) M6 Screws, Split Washers, and Washers. Do not over tighten.